



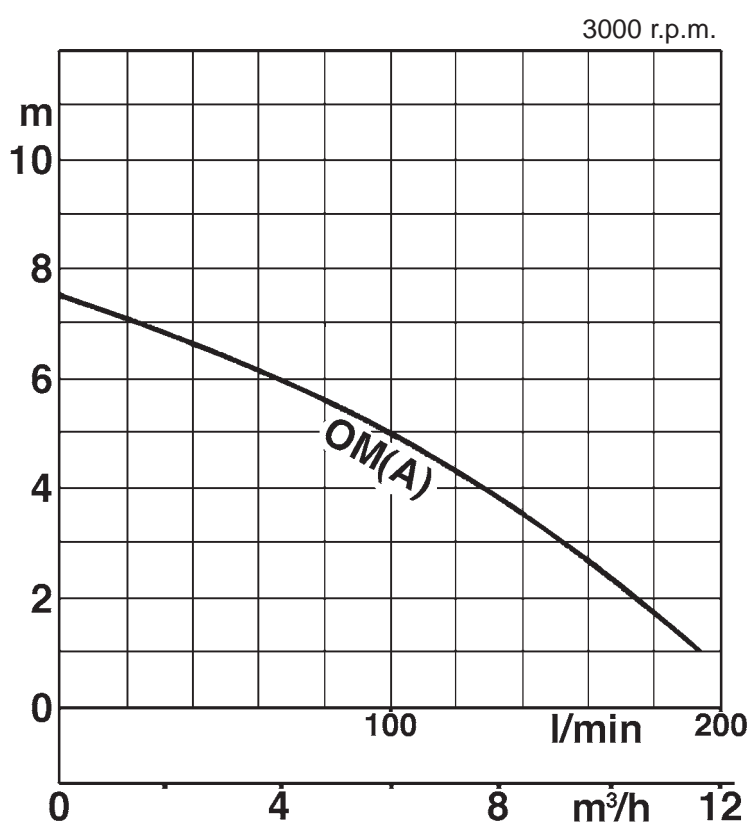
Tsurumi OM(A)

230V
110V
50Hz

Submersible Sump Pumps



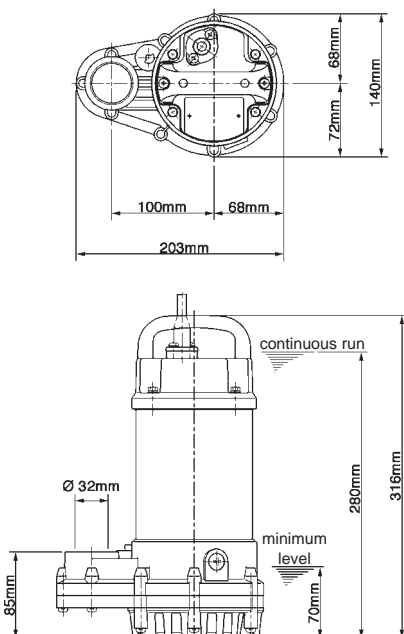
With a light fibre-reinforced plastic (FRP) casing and head cover, the pump is abrasion and corrosion resistant, minimizing maintenance.



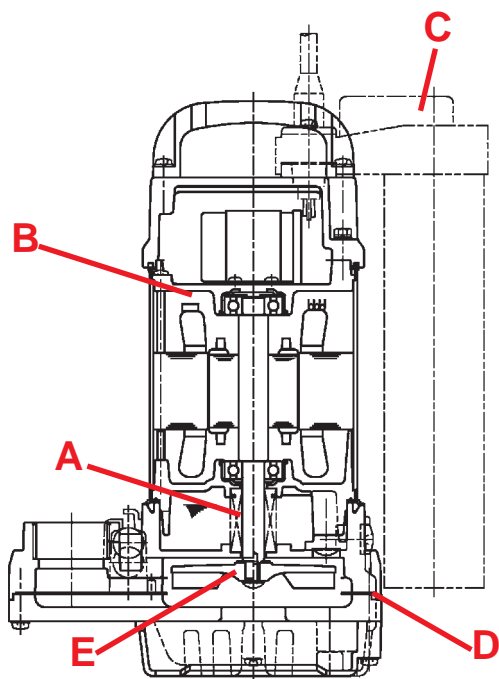
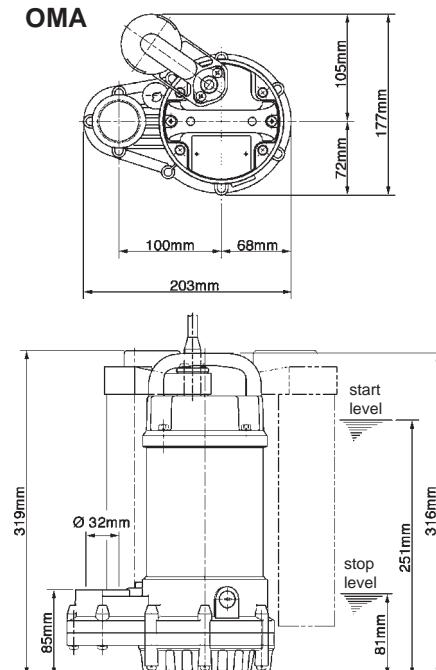
The torque-flow impeller eliminates blocking and binding. Made of FRP, it withstands long operation with minimal abrasive wear.

Model	Dis-charge Bore mm	Motor Output kW
OM(A)	32	0,15

OM



OMA



- A** Double mechanical shaft-seal in oil chamber ensures maximum protection and long motor life.
- B** A thermostat protects the powerful 0,15 kW motor from overheating.
- C** Integral float-type level unit (only OMA) controls water level precisely and automatically, switching the pump on and off as level rises and falls.
- D** With a light fibre-reinforced plastic (FRP) casing and head cover, the pump is abrasion and corrosion resistant, minimizing maintenance.
- E** The torque-flow impeller eliminates blocking and binding. Made of FRP, it withstands long operation, with minimal abrasive wear.

We reserve the right to change specifications and designs herein for improvement without prior notice. Our pumps are for professional use only. In the event that Tsurumi (Europe) GmbH have, in exceptional cases taken over, a manufacturer's warranty, this entitles the end-user to assert remedy free of charge against Tsurumi (Europe) GmbH due to any defect to the product occurring during the guarantee period (see below), also then when the warranty claims against the seller do not or no longer exist. In the event of malfunction, which is attributable to the improper handling by the enduser, no guarantee claim shall arise. Further claims shall not result from the warranty, unless if something to the contrary has explicitly been determined. The decision as to whether remedy is effected by way of replacement or repair shall be at the choice of Tsurumi (Europe) GmbH. The claims shall be time barred after a period of three months after expiry of the guarantee period, however, not before expiry of the warranty period which is valid towards the seller. In the event of doubt, the warranty period shall correspond with the warranty period which is valid between the end-user and his seller.

Tsurumi (Europe) GmbH

Heltorfer Straße 14
D-40472 Düsseldorf
Tel.: +49-211-4179373
Fax: +49-211-4791429
Email: sales@tsurumi-europe.com
www.tsurumi-europe.com

Your Dealer